



**PARADE**  
10:30 a.m.  
Saturday, Sept. 15  
Downtown Columbus

**Lake Lumber  
Company**  
FOR ALL YOUR  
BUILDING NEEDS  
*BEST WISHES TO THE  
FAIR*

200 Glen Flora Rd. Eagle Lake  
234-3102

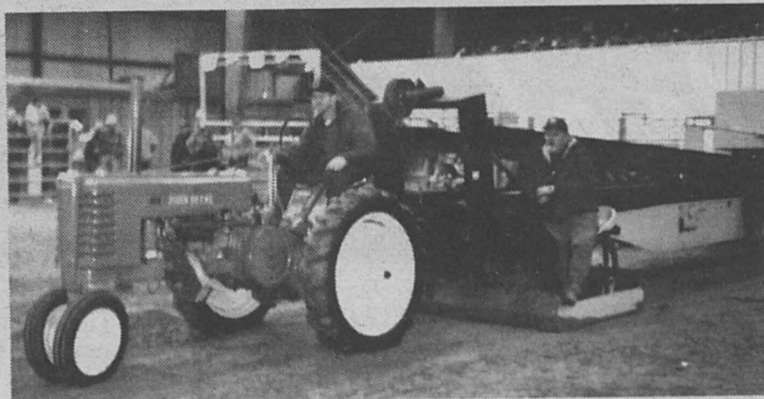
**C.J. & Gloria Ruether  
CJ'S AUTO  
SALES**

"Quality At An Affordable Price"  
911 Walnut  
Columbus, Tx 78934  
Phone/Fax 979-732-6830  
Res.: 979-732-5830



**Edward Jones**

Member New York Stock Exchange, Inc. and  
Securities Investor Protection Corporation  
Gary L. Braun, CFP  
Investment Representative  
526 Spring P.O. Box 159 Columbus  
Toll Free 800-752-8266  
Bus. (979) 732-8266 Res. (979) 732-3045



### Antique Tractor and Engine Display To Add Antique Tractor Pull At This Year's Fair

This year's 23rd Annual Fair will host a tractor pull for the old tractors that our "experienced" or "wiser" citizens grew up with. We are inviting anyone that has a 1960 or older tractor to pull a sled that is made for antique tractors.

We will have five divisions with weight classes in each division. Division I starts with a 2500 lb. stock tractor as you would use at the farm. An example is a Farmall A or B or Allison-Chalmers B or C. Division I will have seven weight classes up to 8500 lbs.; the other divisions, II, III, IV and V, will also have classes up to 8500 lbs. The higher the division, the more the stock tractor can be modified for higher horsepower and more pulling power.

There will be a scale positioned at the start which keeps everyone honest and can be used Friday for practice pulls and Saturday for weight adjustments.

Anyone that pulls will be charged \$15.00 hook fee on Saturday during the competition for each pull. Trophies and ribbons will be awarded and all participants will receive special treatment for helping make the Antique Tractor and Engine Display something to remember.

Pull sled and scale from Bicknell/Miller/Lancaster/Lawler and Texas Antique Tractor Pull Association rules will be our guideline. Contact Franklin Hudec at 713-224-5326 (work) or 979-732-5863 (home) for information.

**THEUT  
GLASS  
COMPANY**  
Est. 1968

*The Theut Companies*

\*Auto Glass \*Mirrors \*Plexiglas  
\*Store Fronts \*Shower Doors  
\*Thermo-Pane  
\*Storm Windows \*Solar Screens  
Family Owned & Operated

979-732-6251

Theut Glass Co.  
814 Wallace  
Columbus, TX 78934

979-732-2201

Columbus Glass  
922 Walnut  
Columbus, TX 78934

979-885-2951

Sealy Glass & Mirror  
212 Meyer  
Sealy, TX 77474

## SHOPPA'S FARM SUPPLY Incorporated

### EAGLE LAKE

1701 E. Main  
Eagle Lake, Tx 77434  
(979) 234-5524 • (800) 281-8346  
Manager: Draper Stephens

### BAY CITY

1402 FM 3156  
Bay City, TX 77414  
(409) 245-2711 • (800) 750-8943  
Manager: Morris Crabtree

### EL CAMPO

1010 Hwy. 59 West  
El Campo, TX 77437  
(409) 543-8363 • (800) 753-8363  
Manager: Eric Burrow

### EAST BERNARD

628 S. Dill  
East Bernard, TX 77435  
(979) 335-4887 • (800) 460-4888  
Manager: Richard Vacek

### EDNA

1116 S. Wells  
Edna, TX 77957  
(512) 782-3301 • (800) 944-5242  
Manager: David Rose



# THE FIRST STATE BANK

Internet Banking @  
[www.fsbcolumnbus.com](http://www.fsbcolumnbus.com)

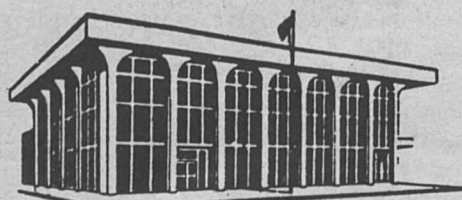
**24 Hour Telephone Banking:**  
**(979) 732-2333**

**Lobby Hours: Monday-Friday, 9 a.m. to 3 p.m.**

**Drive-in Hours: Monday-Thursday, 7:30 a.m. to 3 p.m.**  
**Friday, 7:30 a.m. to 6 p.m.**  
**Saturday, 8 a.m. to 12 noon**



Time and  
Temperature  
979-732-TIME



**EQUAL HOUSING LENDER**  
**MEMBER F.D.I.C.**

**420 Walnut Street**  
**Columbus, Texas 78934**  
**979-732-2332**